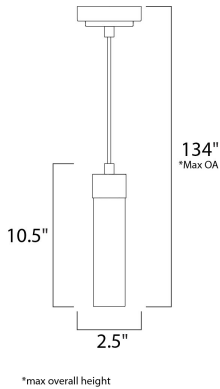




PRODUCT DESCRIPTION

This ever popular collection is now available in LED. Four integrated LED boards are enclosed with a commercial grade dimmable driver for ultimate function and long life. Great for commercial or residential applications, Matte White glass twist locks into a steel base finished in Satin Nickel for a clean modern look.



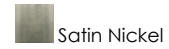
MEASUREMENTS

DIMENSION : 4.75" L x 4.75" W x 12.5" H
 MAX OAH : 134" OAH x 4.75" W x 4.75" H
 HANGING WEIGHT : 2.7 lb

LAMPING

INPUT VOLTAGE : 120V
 LUMENS : 672 Rated
 BULB : 4 x 2.4W LED PCB Integrated , 10W Total
 BULB INCLUDED : (Integrated)
 DIMMABLE : Triac CL
 COLOR_TEMP : 3000K

FINISHES OPTION



GLASS

Matte White 11

MATERIAL

Steel

RATINGS

cETLus
 Dry Location



ADDITIONAL

ADJUSTABLE
 SLOPE: 120
 OPERATING TEMPERATURE:
 -20°C (-4°F), 40°C (104°F)

PHOTOMETRIC: Report Found Online

Always consult a qualified electrician before installing any lighting product.



Contemporary
 Lighting™

WESTERN DISTRIBUTION CENTER (HEADQUARTER)
 253 NORTH VINELAND AVE | CITY OF INDUSTRY, CA 91746
EASTERN DISTRIBUTION CENTER
 4200 SHIRLEY DR. | ATLANTA, GA 30336
 P. 626.956.4200 | F. 626.956.4225 | et2online.com